



Berecroft | | Harlow | CM18 7SB

£2,000 PCM

 clarknewman

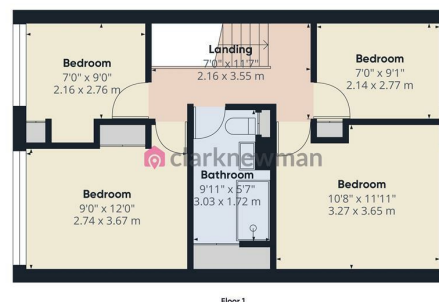
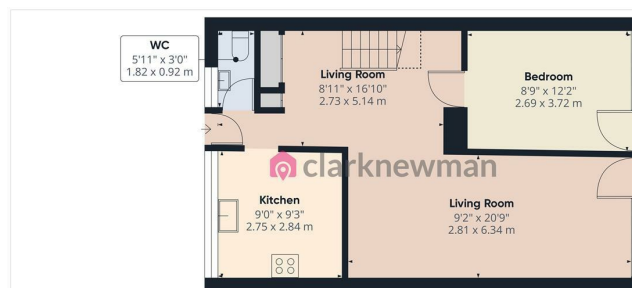
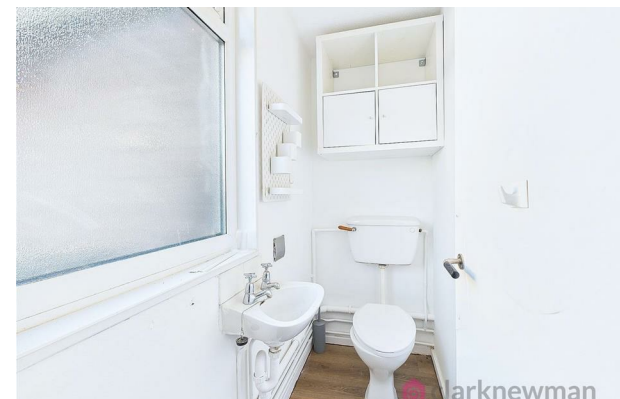
Berecroft |
Harlow | CM18 7SB
£2,000 PCM

A FIVE BEDROOM MID TERRACE HOUSE. The ground floor comprises of a large reception room with kitchen, WC and double bedroom. Upstairs includes a further two double bedrooms and two single bedrooms. There is also a new family bathroom suite (with shower/no bath). The property also benefits from gas heating via radiators and UPVC double glazed windows. The garden is laid to lawn with patio and shed. The property is available unfurnished NOW. This is a non-smoking property and the landlord does not allow pets.

- Five Bedrooms
- Available NOW
- Council Tax Band: B
- Mid Terraced House
- Unfurnished
- EPC Rating: D

Front
Entrance Lobby
WC
5'11" x 3'0" (1.8 x 0.91)
Kitchen
8'11" x 8'10" (2.72 x 2.69)
Living Room
21'0" x 12'0" Max (6.4 x 3.66 Max)
Ground Floor Bedroom
12'2" x 8'7" (3.71 x 2.62)
Landing

Bedroom Two
12'3" x 8'11" (3.73 x 2.72)
Bedroom Three
11'10" x 11'0" (3.61 x 3.35)
Bedroom Four
8'8" x 7'0" (2.64 x 2.13)
Bedroom Five
9'0" x 6'11" (2.74 x 2.11)
Bathroom
9'7" x 5'6" (2.92 x 1.68)
Garden
35'0" Approx (10.67 Approx)
Local Area



clarknewman

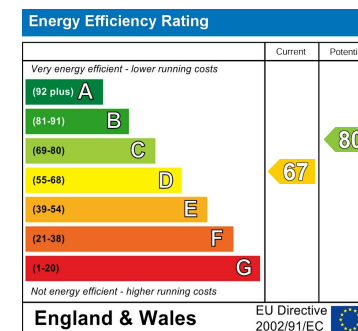
Approximate total area*
1039.7 ft²
96.59 m²
Reduced headroom
15.71 ft²
1.46 m²

(1) Excluding balconies and terraces

Reduced headroom
Below 5 ft/1.5 m

While every attempt has been made to ensure accuracy, all measurements are approximate, not to scale. This floor plan is for illustrative purposes only.
Calculations were based on RICS IPMS 3C standard. Please note that calculations were adjusted by a third party and therefore may not comply with RICS IPMS 3C.

GIRAFFE360



Equity House
4-6 Market Street
Harlow
Essex
CM17 0AH
01279 400444
hello@clarknewman.co.uk
www.clarknewman.co.uk